



OUTDOOR
Safety Surfacing



TABLE OF CONTENTS

Foundation.....	3
EPDM.....	4
Bonded Rubber	5
Artificial Turf.....	6
Landscape	7
Splash Pad	8
Rubber Mulch	8
Wood Mulch.....	9
Athletics & Fitness	10
Color Options/Maintenance.....	11



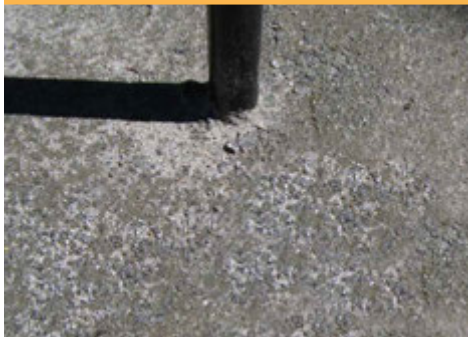
About the Company

With over 40 years of experience combined, you can be confident in making Outdoor Safety Surfacing your provider of assured covering. The essence of this company based just outside of Atlanta, GA is focused on family and safety oriented products. We understand your need for a combination of fun, durable and above all safe surfacing to base your outdoor activities. Our customer service representatives help to provide the ideal process towards your outdoor experience. Our exceedingly experienced maintenance staff knows every aspect of our product and brings a trust in the safety of your surface investment. Whether we are lessening impact from playground falls or making your jogs more comfortable, Outdoor Safety Surfacing is the best choice.

Choosing Your Surfacing Type

Our company has the perfect combination of surface choices and maintenance services to accurately transform your vision into a safe and environmentally conscious reality. Let us help you convert the images you have into the ideal outdoor surfacing that we specialize in. We will be with you every step of the way from choosing the best surfacing option for your needs, to maintaining our products, to ensuring prime safety features for years to come. Visit our website or call one of our friendly customer service members to set up a professional and knowledgeable consultation.

STONE



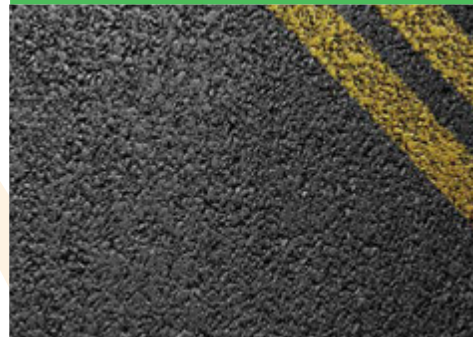
Stone is the most commonly used sub base and the least expensive. There are many names for this type of rock depending on what part of the country you are in. The general rule of thumb is DOT approved Road Base. The compaction should be 90% or greater prior to installing the safety surface.

CONCRETE



Concrete is also an acceptable sub base. It can be the most expensive depending on your location and square foot area. The concrete thickness should be at least 4" and no less. Be aware that if your area is in a courtyard or difficult to access, you will need a pump truck.

ASPHALT



Asphalt is most commonly used as a sub base when it is pre existing. Rarely is it used as a new sub base install. The asphalt edges are not as detailed as concrete or compacted stone for new areas.

SOLID BORDER



Solid borders are normally formed out of concrete. Keep in mind that when you create a border around your surfacing you are creating a bowl that holds water. There should never be standing water in your surface area. There are many types of drainage options to solve water issues.

SURFACE TO SURFACE



In some cases your new surface may border another type of safety surface. In the picture above this is EPDM against artificial turf. Depending on the two types of surface and the fall height, the mechanics to connect the two can vary.

ROLLED EDGE



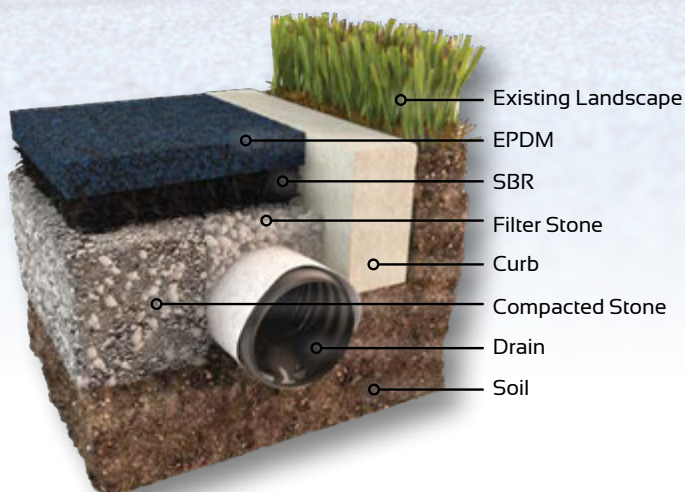
The rolled edge application is the most commonly used method. The edge of the surfacing will die into a trench around the sub base. After the surfacing is installed the dirt from the trench is used to backfill against the surfacing.



EPDM

Two Layer Surfacing

Our two layered poured-in place surfacing is a mixture of environmental and consumer friendly options. The base layer is comprised of 100% recycled rubber. This rubber acts to soften impact when running or falling on this material. The second layer is made up of ½" EPDM (ethylene propylene diene monomer) which helps to decrease wear and tear. This second layer comes in a variety of different colors that brighten the appearance of your product.

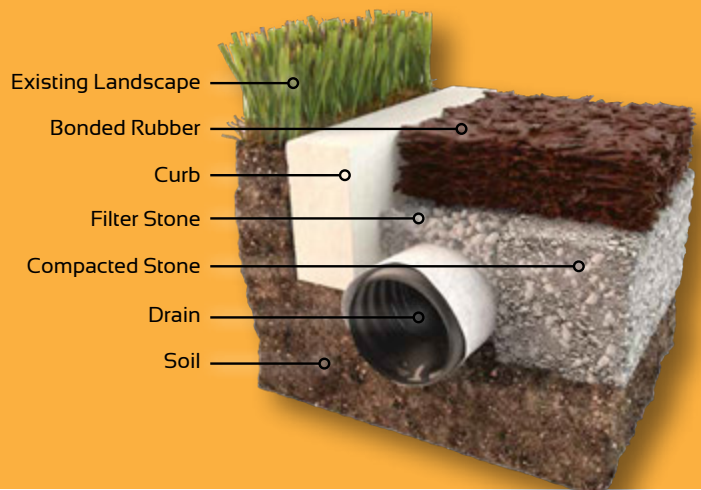




BONDED RUBBER

Financially Smart

Bonded rubber is one of the most durable and affordable surface options available today. Our bonded rubber is 100% recycled and also comes in 5 different color options. As opposed to EPDM, bonded rubber is a single layered surface which saves you time and money. This benefit is met with the ability to drain well and respond fittingly to heat and cold. Whether this surface is found on a playground or beneath the feet of runners and walkers, it is a durable and financially sound choice.

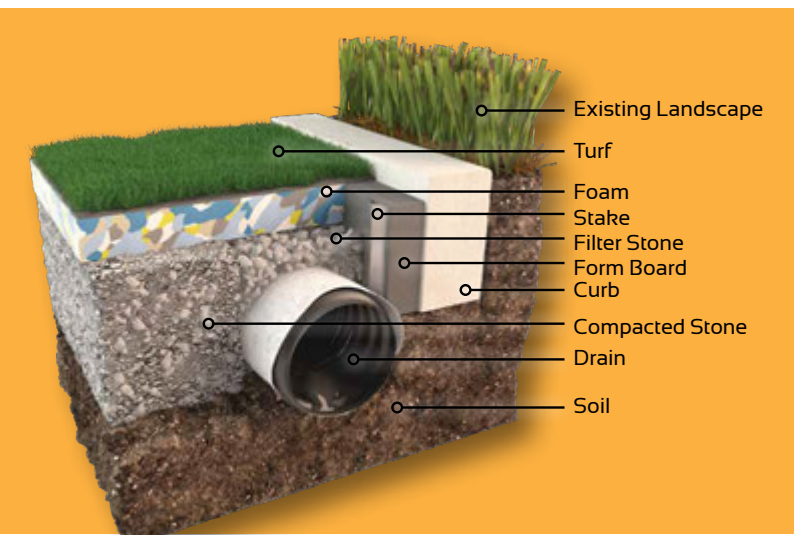




ARTIFICIAL TURF

Low Maintenance

This synthetic yet life like alternative to grass is a durable and efficient option for anything from dog parks to putting greens. The turf can be found indoors or outdoors and works well with the environments of both. The idea is that you can have grass that looks pristine and real, yet there is almost no maintenance involved. Our turf is resistant to continuous impact from feet and even weather. The Turf is permeable making it possible to use after a down pour of rain. Even professional athletes trust this alternative to grass when surfacing their playing fields.

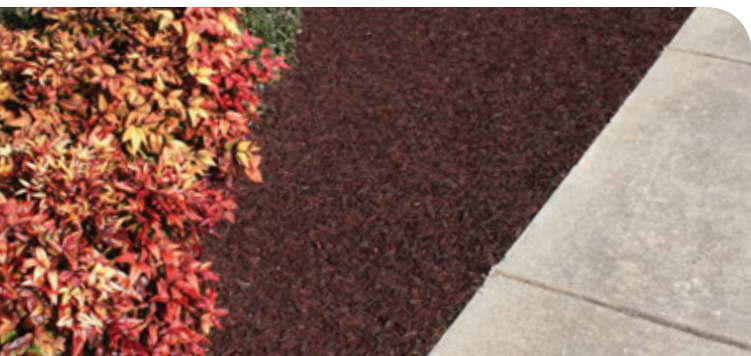




LANDSCAPE

More Moisture, Less Weeds

Our material is an ideal choice for use in landscaping. As opposed to using pure soil or wood chips, we utilize our bonded rubber. This is not only an environmentally conscious decision but provides more benefits than soil alone would. The 1 inch layer of rubber absorbs less water than wooden alternatives. This provides more liquid to your soil for your plants and grass. The rubber component also reduces the growth of weeds and fungus throughout your landscape. This protects your plants and garden more than traditional methods. Regardless of your type of landscape, our rubber material is the smartest choice for you.





SPLASH PAD

Non-Slip, Cushioned Surface

Splash pads with rubber surfacing are found in water parks as opposed to concrete. When water is involved, child safety is the first priority. Water can turn a paved surface into a mother's worst nightmare. The exterior that your child is running around and splashing on becomes a slippery mess at water parks. With the use of our rubber surfaces, you can feel assured knowing that a fall will be less severe.



RUBBER MULCH

Safer, Long Lasting Alternative

Rubber mulch consists of bits of rubber that are in the shape of regular mulch. There are many advantages to these rubber bits as opposed to the wood ones that are usually seen in landscaping. First of all, the rubber mulch is made from recycled materials such as tires; this prevents waste of natural resources. This rubber material is also more effective for a plant environment. It absorbs less water on the way to the soil as well as reducing fungus and weeds. The other great advantage for using rubber mulch is when it is used on playgrounds. The texture of this alternative mulch gives it a bouncier and safer surface to land on when children are playing on this surface. Overall, rubber mulch is an environmentally friendly and safe alternative to wood mulch as well as a more sound investment.





WOOD MULCH

Efficient and Economical

Child safe engineered wood fiber (EWF) is an economical choice for playground surfacing. EWF is not only sustainable but also more accessible than sand or gravel surfacing. This surface makes it more efficient for the traverse of wheelchairs and strollers around the playgrounds. It is a very absorbent material that will withstand high foot traffic and changing weather conditions. This alternative to real wood is a deterrent of bugs and weeds that taint playgrounds. EWF is also more efficient than gravel or sand in its ability to decrease impacts of falls that are so commonly seen on playgrounds. It is also the only surfacing that meets all of the qualities and standards for child safe mulch. EWF is a maintainable, accessible and safe decision for playground surfacing.





ATHLETICS AND FITNESS

Smart, Safe and Easy

Synthetic turf on athletic fields is not only a financial savvy choice, but is the most practical and low maintenance option on the market today. These fields, filled with sand or rubber, look as pristine and real as well maintenance grass. The catch is that there is no maintenance involved. Our fields look great and are also safer than real grass because of the bounce given by the rubber in the turf. Not only does the turf withstand impact from running athletes, but it prevails through the varying weather changes. Whether your athletic field be found indoors or outdoors, synthetic turf is the best option available today.



COLOR OPTIONS

EPDM Standard Colors



EPDM Premium Colors



Bonded Rubber Colors



MAINTENANCE

Protect Your Investment

As with many things in the recreational world, our product requires maintenance. However, the attention that is needed for our surfacing is only a fraction of what is essential for real grasses. Our materials are high quality and low cost compared to other options. Wear and tear from cold, heat and impact does take a toll over time. With our yearly roll coat services you can extend the life and warranty of your surfacing. This investment is not only beneficial for the appearance and durability of surfacing, but plays a key role in the safety of its users. By maintaining your product you also ensure that the impact of falls will be absorbed by this material.

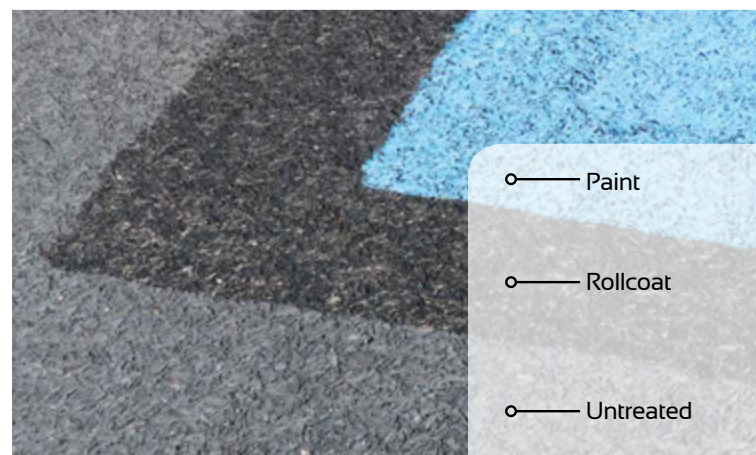
Maintenance Types

Yearly maintenance on your surfacing is important short and long term. Our material is guaranteed to last, but the warranty extends along with the life of the surface when you take advantage of yearly maintenance. There are three different options for your surfacing.

Paint: Painting your surface adds two properties to your surfaces. Firstly, this high UV rated coat helps to protect from the wear and tear of sun exposure. Secondly, this paint adds vibrant colors to your surfaces. This paint brings life with every maintenance service. You have the option to paint everything one color, or you can add features like a hopscotch area. The opportunities for what is painted on you surface are endless.

Roll Coat: This diluted binding agent absorbs into your surface. It has the same benefits as paint in its ability to renew and revitalize your surfaces color and texture. It is ideal to do this at least once every year to maintain your material. Your investment in these services will extend the life and rejuvenate the appearance of your custom surfacing.

Untreated: Leaving your surfacing untreated effects not only its appearance but its texture. Without these yearly coats your colors will become dull and fade away. It will also leave the surface vulnerable to transfer onto hands and shoes as you come in contact with it. Maintaining your surface will prove to keep the life and exterior of your surface like new.





OUTDOOR
Safety Surfacing

221 Cable Industrial Way

Carrollton, GA 30117

678.390.1109

www.outdoorsafetysurfacing.com

info@outdoorsafetysurfacing.com

