

Indoor Playgrounds

BY SUPERIOR RECREATIONAL PRODUCTS





Ready. Set. Play!

Explore playgrounds that provide hours of entertainment for children ages 2-12 years of age. Our playgrounds are designed with a priority on safety while challenging and exploring their own capabilities.

Designed with imagination, technology, and safety in mind, we pride ourselves with meeting the industry's strictest safety standards. You and parents alike can rest easy knowing children's safety take precedence in a Superior indoor playgrounds structure.

Easy to maintain indoor playgrounds help you and your business stay competitive to keep customers coming again and again. Whether you are looking to add, update, or install a brand new structure, a Superior dealer is ready for you!

Pick out a structure from this catalog, or **contact a rep** to start your custom playground design today!

. IN THIS . Catalog

Click below to discover...

Site Inspirations	2
Playground Structures	5
Components	16
Colors & Information	20





click to go to each section ►

INSPIRATIONS

STRUCTURES

COMPONENTS

COLORS & INFORMATION



Parties for Kidz

Peachtree City, GA

Day-in and day-out you can catch little ones climbing the Octalink Tower, crawling through the many tubes and tunnels to get to the Turbo Copter, Race Car and Tri-plane vehicles. Inside, children also find multiple car-themed accessories including a steering wheel! Don't forget about the four slides and many lookout spheres.

[Similar structure here](#) ►



2



Distributed by: Korkat, Inc.



Call Us Today.



(888) 356-7528



click to go to each section ►

INSPIRATIONS

STRUCTURES

COMPONENTS

COLORS & INFORMATION



Church Family Center

Carrollton, GA

Of the many features this structure has to offer, a Hammerhead Shark, Octalink Tower, and many lookout spheres, numerous play panels, and much more! After the children tire themselves out from all the fun, they slide down a 3-level spiral slide then grab their shoes out of the Shoe Saver.

[Similar structure here ►](#)

3



Distributed by: Korkat, Inc. **KORKAT**

Call Us Today.



(888) 356-7528



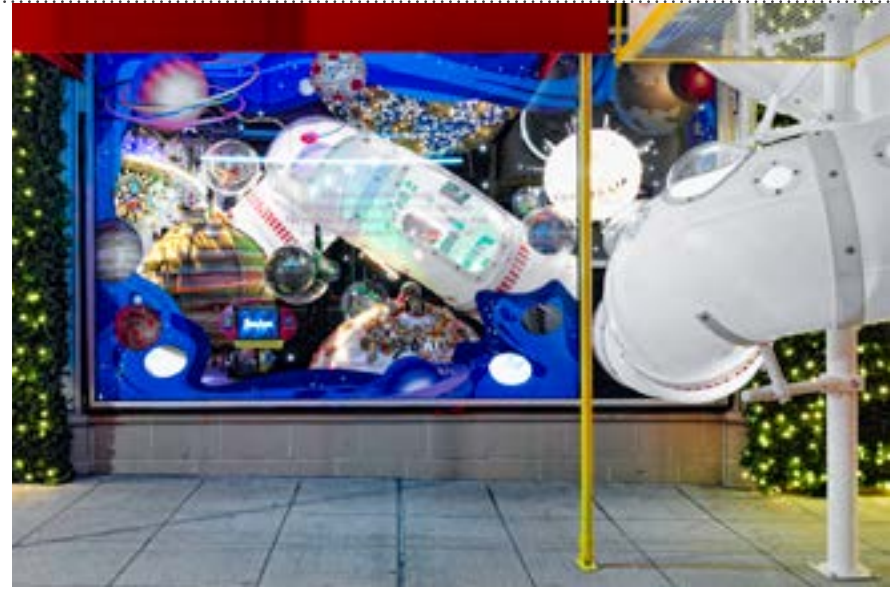
click to go to each section ►

INSPIRATIONS

STRUCTURES

COMPONENTS

COLORS & INFORMATION



Family Retail Store Market

Dallas, TX

This featured structure was installed as part of a window display during the holidays at a luxury department store. The theme for the window display was outer space. Custom designed for the department store, you can see the long tunnel, with many lookout spheres, a 2-way cube, web crawl and several 90° elbow components. [Similar structure here](#) ►





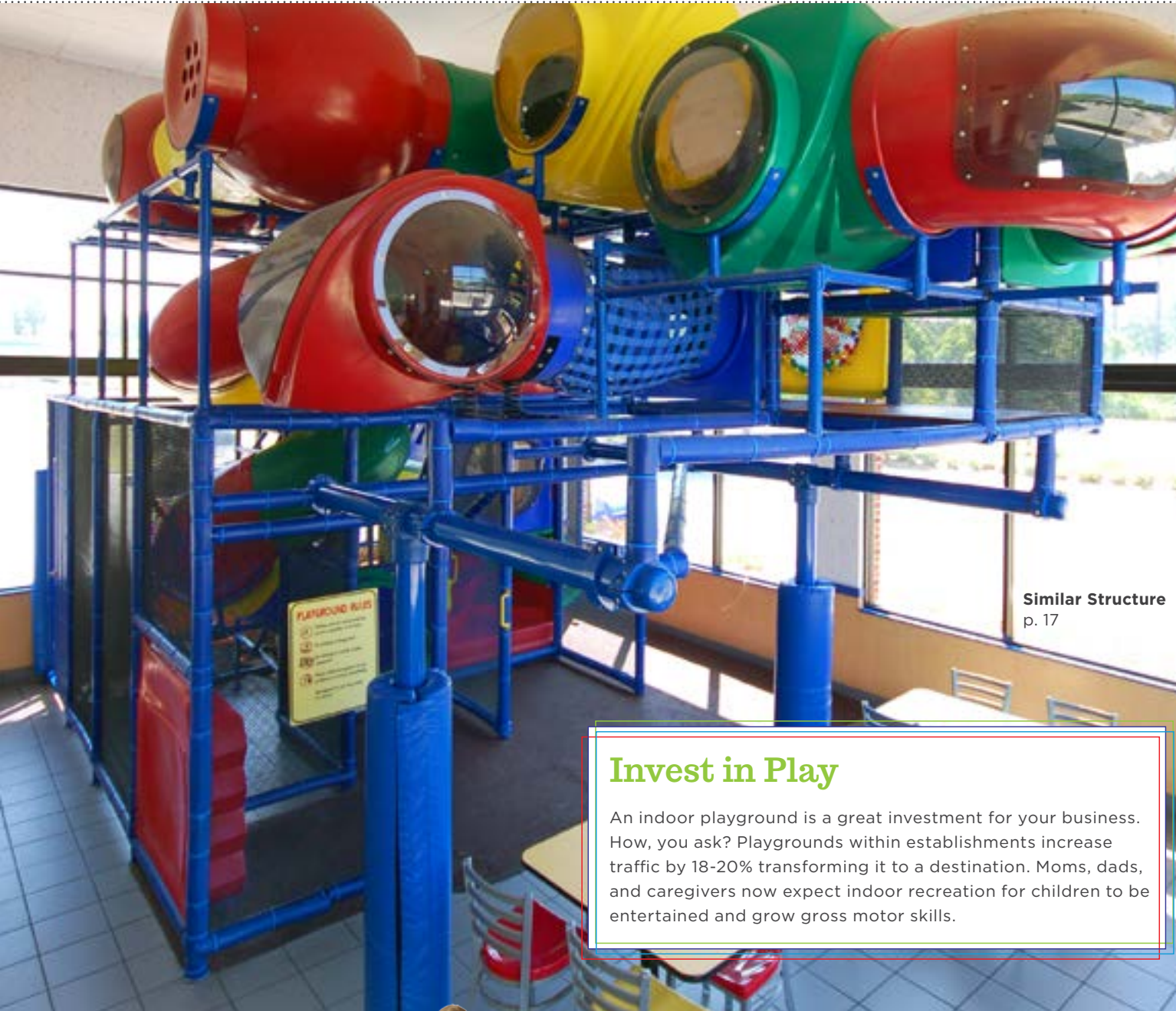
click to go to each section ►

INSPIRATIONS

STRUCTURES

COMPONENTS

COLORS & INFORMATION



Similar Structure
p. 17

Invest in Play

An indoor playground is a great investment for your business. How, you ask? Playgrounds within establishments increase traffic by 18-20% transforming it to a destination. Moms, dads, and caregivers now expect indoor recreation for children to be entertained and grow gross motor skills.

FEATURED Structures

Model 8432-0
p. 8



Model 6198-0
p. 9



Model 8334-0
p. 14





click to go to each section ►

INSPIRATIONS

STRUCTURES

COMPONENTS

COLORS & INFORMATION



MODEL 7713-0

Size: 18' x 16' x 8'4"

Capacity: 22

Features:

- | | | | | |
|------------------|-------------------|------------------------|--------------------|---------------|
| 1. Turbo Tube | 3. Lookout Sphere | 5. Concentration Panel | 7. Ball Turn Panel | 9. Shoe Saver |
| 2. Driving Panel | 4. Hook Slide | 6. Tic-Tac-Toe Panel | 8. Crawl Tubes | |

ADDITIONAL VIEWS





click to go to each section ►

INSPIRATIONS

STRUCTURES

COMPONENTS

COLORS & INFORMATION



MODEL 8314-1

Size: 26'3" x 20'3" x 8'4"

Features:

Capacity: 42

1. Turbo Copter
2. Crawl Tubes

3. Turbo Tube
4. 2-Way Cube

5. Straight Slide
6. Driving Panel

7. Tic-Tac-Toe Panel
8. Lookout Sphere

ADDITIONAL VIEWS





click to go to each section ►

INSPIRATIONS

STRUCTURES

COMPONENTS

COLORS & INFORMATION



MODEL 8432-0

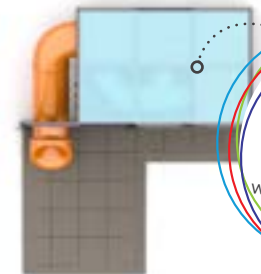
Size: 12' x 10' x 8'4"

Capacity: 20

Features:

- | | | | |
|------------------|-----------------|----------------------|--------------------|
| 1. Gear Panel | 3. Deck Climb | 5. Shoe Saver | 7. Ball Turn Panel |
| 2. Driving Panel | 4. Mirror Panel | 6. Tic-Tac-Toe Panel | 8. Hook Slide |

ADDITIONAL VIEWS





MODEL 6198-0

Size: 18'2" x 18'4" x 16'10" **Features:**

Capacity: 40

- | | | | |
|---------------------|-------------------------|---------------|-----------------------------|
| 1. Rocket Climb | 3. Jet Fighter | 5. Shoe Saver | 7. Interactive Turbo Copter |
| 2. Half Dome Sphere | 4. 3-Level Spiral Slide | 6. Race Car | |

ADDITIONAL VIEWS





click to go to each section ►

INSPIRATIONS

STRUCTURES

COMPONENTS

COLORS & INFORMATION



14'3"

MODEL 7716-0

Size: 24' x 16' x 14'3"

Capacity: 68

Features:

- | | | | |
|-----------------|----------------------|--------------------------|------------------|
| 1. Spiral Slide | 4. Ball Turn Panel | 7. Tri-Plane | 10. Shoe Saver |
| 2. Safari Jeep | 5. Tic-Tac-Toe Panel | 8. Horiz./Vert. Squeezes | <i>and more!</i> |
| 3. Turbo Tube | 6. Dinosaur Panel | 9. Two Hook Slides | |

ADDITIONAL VIEWS





MODEL 6177-0

Size: 18'6" x 32'3" x 18'6 1/4" **Features:**

Capacity: 52

1. 4-Level Spiral Slide
2. Tri-Plane

3. Turbo Copter
4. Snake Crawl

5. Triple Race Slide
6. Vertical Squeeze

7. Punching Bags
8. Web Crawl

and more!

ADDITIONAL VIEWS





click to go to each section ►

INSPIRATIONS

STRUCTURES

COMPONENTS

COLORS & INFORMATION



14'4"

MODEL 8043-3

Size: 16' x 12' x 14'4"

Capacity: 36

Features:

- | | | | | |
|---------------------|----------------------|--------------------|-------------------|------------------|
| 1. Shoe Saver | 3. Tic-Tac-Toe Panel | 5. Ball Turn Panel | 7. Lookout Sphere | 9. Punching Bags |
| 2. Vertical Squeeze | 4. C-Force Panel | 6. Turbo Copter | 8. Spiral Slide | |

ADDITIONAL VIEWS





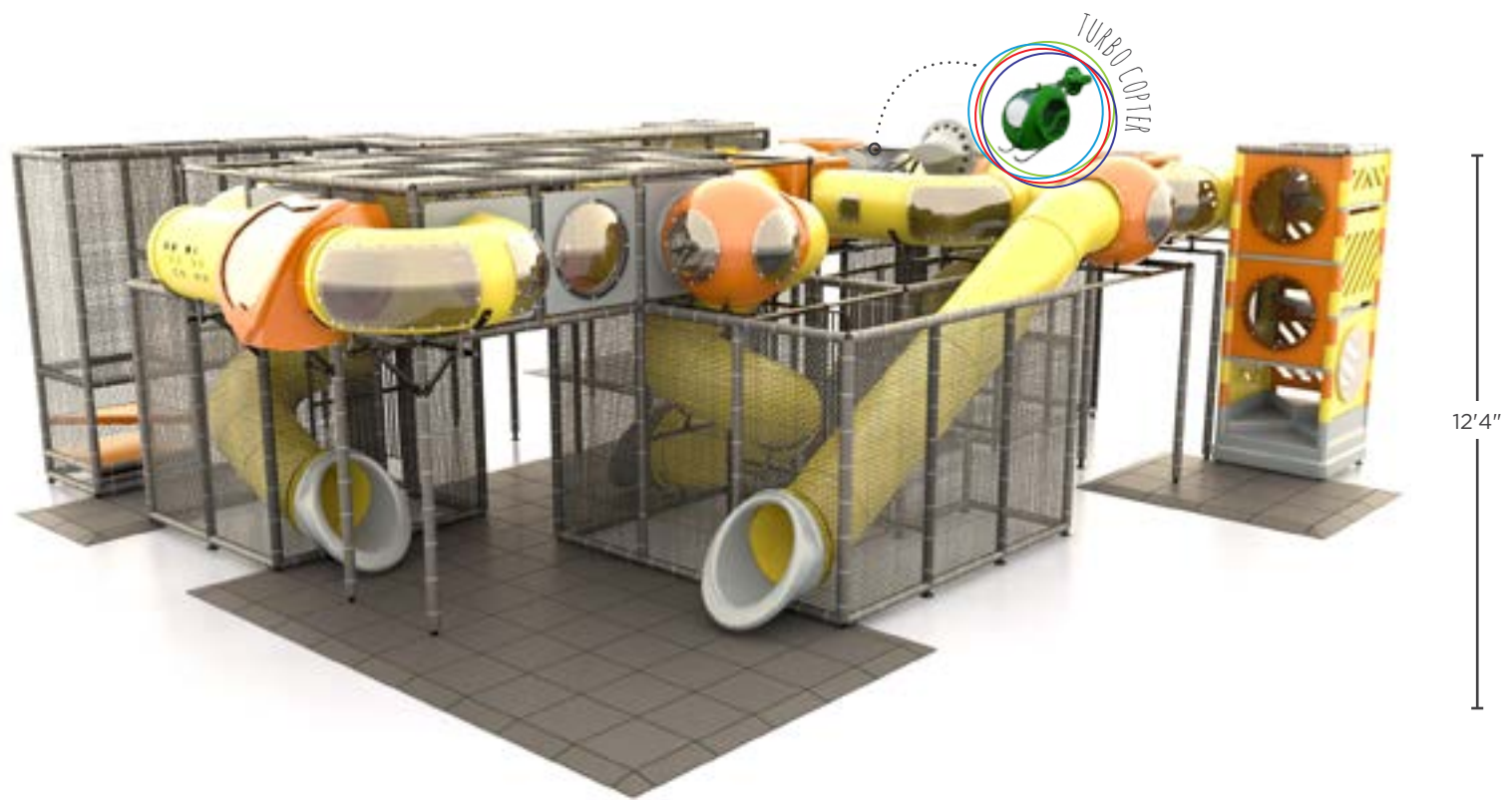
click to go to each section ►

INSPIRATIONS

STRUCTURES

COMPONENTS

COLORS & INFORMATION



MODEL 8243-0

Size: 40'4" x 37' 11¼" x 12'4" **Features:**

Capacity: 110

- | | | | |
|----------------------|------------------|-------------------|-----------------------------|
| 1. Turbo Tube | 3. Maze Pads | 5. Turbo Copter | 7. Lookout Spheres |
| 2. Tic-Tac-Toe Panel | 4. Punching Bags | 6. Octalink Tower | 8. Spiral & Straight Slides |

ADDITIONAL VIEWS





click to go to each section ►

INSPIRATIONS

STRUCTURES

COMPONENTS

COLORS & INFORMATION



MODEL 8334-0

Size: 24' x 20' x 12'4"

Capacity: 46

Features:

1. Punching Bags
2. Log Jam

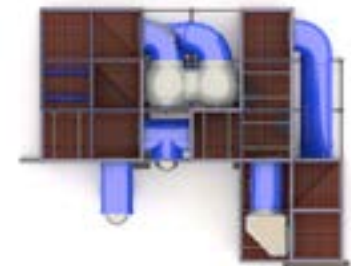
3. Lookout Spheres
4. Maze Pads

5. Hook Slide
6. Tic-Tac-Toe Panel

7. Ball Turn Panel
8. T-Climb

and more!

ADDITIONAL VIEWS





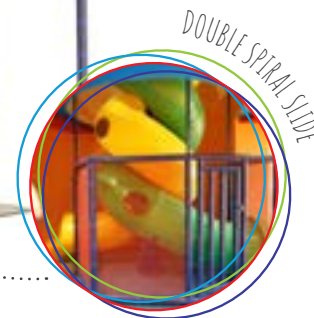
click to go to each section ►

INSPIRATIONS

STRUCTURES

COMPONENTS

COLORS & INFORMATION



MODEL 8460-0

Size: 24' x 16' x 18'4"

Capacity: 60

Features:

1. Shoe Saver
2. Hook Slides

3. Punching Bags
4. Web Crawl

5. Maze Pads
6. Sphere Squeeze

7. Snake Crawl
8. 3-Level Dbl. Spiral

and more!

ADDITIONAL VIEWS





Building Fun!

Want to see some of the parts that build fun? Well, you are in luck! The components featured on the following pages can be used to create your own playground or add components to a playground featured in this brochure.

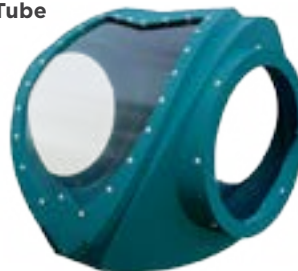
T-Tube I
p. 18

FEATURED Components

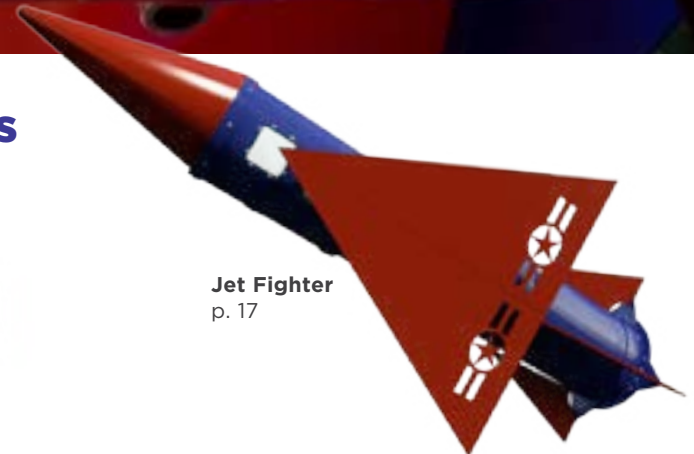
Great White Shark
p. 19



Turbo Tube
p. 18



Jet Fighter
p. 17





VEHICLES

Most of our “vehicles” offer interactive components such as steering wheels and the ability to spin the component’s propellers from within the vehicle.



Rocket Climb



Turbo Copter



Sub Tunnel



Jet Fighter
(T-Tube Climb)



Drag Car



Helicopter



Race Car



Submarine



Train



Tri-Plane



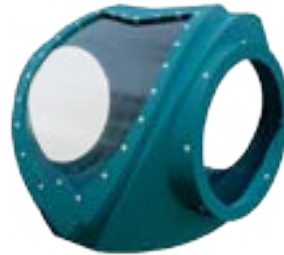


CRAWL THROUGH EXPERIENCE

These components contribute to children's crawl through experience and add flair to the structure's design. Add a T-Tube I for a great half-dome lookout or add a 90° Elbow for a rounded path. Which one is our favorite? The Octalink Tower below!



Octalink
Tower



Turbo Tube



Regular Turbo Tube



Turbo Tube
with Dead End



2-Way Cube



90° Elbow



Corner Wedge



T-Tube I



T-Tube II



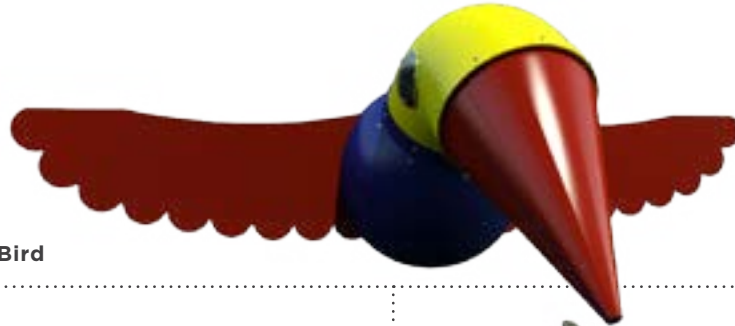
Turbo Climb



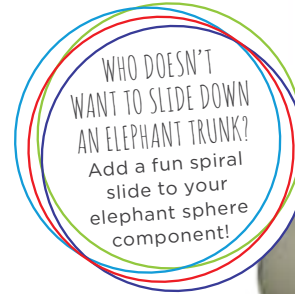


ANIMALS AND SPORTS

Numerous animal and sport themed components that help to build a great structure are offered. Let your imagination run wild and build a safari, underwater, or sports theme playground!



Tucan Bird



Elephant Sphere



Crab



Great White Shark



Hammerhead Shark



Baseball with Dead End



Soccer Ball with Dead End



Sea Horse



Zebra





Colors

PLASTIC COLORS



Light Yellow

Yellow

Orange

Red



Pink

Wine

Purple

Royal Blue



Sky Blue

Cobalt

Teal Blue

Teal Green



Light Green

Spring Green

Dark Green

Brown



Tan

Gray

Black

White

FOAM PADDING COLORS



Yellow

Red

Purple

Royal Blue



Light Blue

Green

Tan

Gray



Charcoal

General Information

ORDERING PROCESS

The below points provide a general outline of the ordering process:

1. Initial consultation to discuss site and budget information
2. Submission of site plan proposal and pricing information
3. Review and sign approved site plans and cost estimate
4. Sign purchase agreement
5. Manufacturing and shipping
6. Installation of unit

PROPOSALS AND SITE PREPARATION

In order to create a detailed plan unit proposal, the following must be submitted:

- ✓ Floor plan showing location and dimensions of doors, windows, walls, columns, fences, ceiling height, etc.
- ✓ Play unit height impediments such as signs, ceilings, light fixtures, HVAC structures, etc.
- ✓ Existing or proposed structures such as tables, other play elements, benches, booths, etc.
- ✓ Elevation changes such as steps or ramps
- ✓ Proposed surface finishing of area
- ✓ Clear access path to the finished area

Site preparation, including any necessary permits or licenses, is the responsibility of the purchaser. Your site must accommodate the unit and all necessary clearances. If the unit is indoors, carpeting should be installed prior to unit installation. An outdoor site should be secured and surrounded by a fence.

SHIPPING

All freight charges are FOB Carrollton, Georgia, U.S.A. Freight charges are additional and are not included in the selling price of the equipment. Transit time is dependent upon your location.

INSTALLATION

Superior Recreational Products provides professional installation of your indoor playground equipment or water slide by an experienced, qualified installer for an additional cost. This cost will vary based on the amount of equipment, site accessibility, site conditions and travel expenses etc. Unless specifically noted installation charges do NOT include site preparation, permitting or removal of existing equipment. If the as-built conditions are different than original plans SRP must be notified to make necessary changes to the design. If actual site conditions vary from the original plans additional charges may incurred due to additional parts, shipping, additional installation time or return trips.

WARRANTY

Superior Recreational Products warrants that our playgrounds will be free from defects in materials and workmanship for a period of one year from the date of installation. This warranty does not cover damage caused by vandalism, misuse or abuse, altered or modified parts, or cosmetic damage such as scratches, dents, fading or weathering and normal wear and tear. This warranty is valid only if the structures are installed in conformity with instructions provided by Superior Recreational Products using approved Superior parts. Warranty claims must be filed within the applicable warranty period and accompanied by a sales order or invoice number.





General Information (cont.)

QUALITY, STANDARDS, AND GUIDELINES

American Society for Testing and Materials



The American Society for Testing and Materials is an independent and world renowned developer of technical standards utilized in testing a multitude of products. ASTM's F15.29 committee, met consistently for over a decade in the continual development of the F1487 Standard Consumer Safety Performance Specifications for Playground Equipment for Public Use. The current version is F1487-11, published in 2011.



Access Board (ADAAG)

Guidance Available on Play Area Guidelines: <http://www.access-board.gov/news/playguide.htm>

Access Board (The United States Architectural and Transportation Barriers Compliance Board) has completed Accessibility Guidelines for Play Facilities as set forth in the Americans with Disabilities Act of 1990. The Final Report of the Regulatory Negotiation Committee is available via the Internet.



IPEMA™

In the interest of playground safety, the International Play Equipment Manufacturers Association (IPEMA) provides a Third Party Certification Service whereby a designated independent laboratory, TÜV SÜD America Inc., (TÜV), validates an equipment manufacturer's certification of conformance to the ASTM F1487 Standard Consumer Safety Performance Specification for Playground Equipment for Public Use, except sections 7.1.1, 10 & 12.6.1; to CAN/CSA Z614 Children's Playspaces and Equipment, except clauses 9.8, 10 and 11; or both. A list of current validated products may be viewed at www.ipema.org.



U.S. Consumer Safety Product Commission

Handbook for Public Playground Safety: <http://www.cpsc.gov/cpscpub/pubs/325.pdf>



HOW TO BUY

SRP Certified Partner

Our Certified Partners have extensively knowledge and training in all Superior products. You can also expect for the installation process to be top notch. With the Certified Partner logo, you can trust that you'll be provided with the best customer experience and high quality products where you can *play, relax, live*.



Financing

We have partnered with several companies to assist with financing your recreational equipment, and sometimes saves you money. Contact an SRP Certified Partner today to find out more.





Indoor Playgrounds

1050 Columbia Drive
Carrollton, GA 30117
1.800.327.8774
770.832.6660
srpindoorplay.com

Made in the USA



Distributed by: Korkat, Inc. 

Call Us Today.



(888) 356-7528